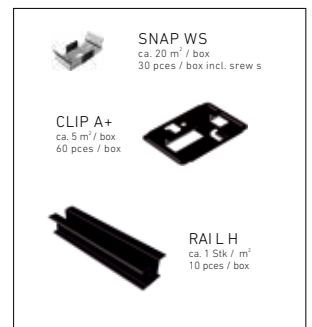
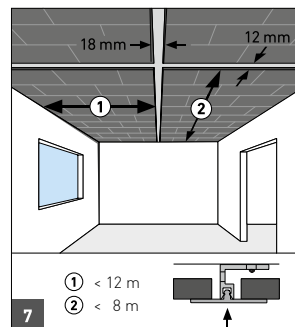
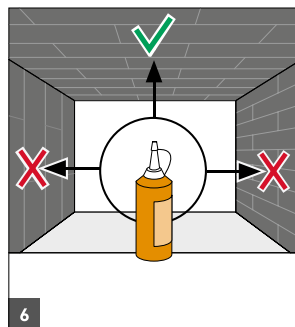
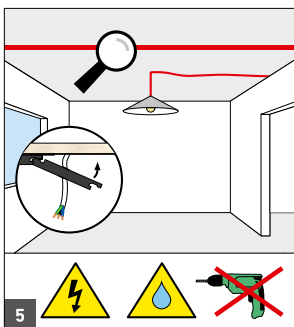
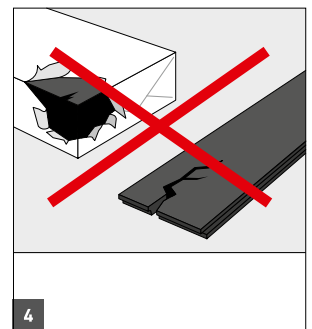
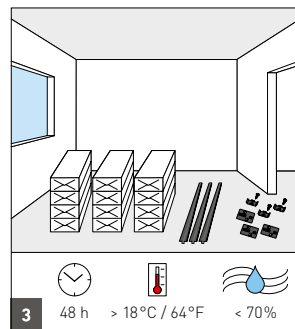
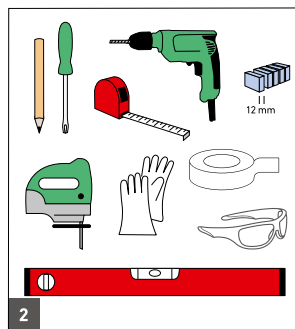
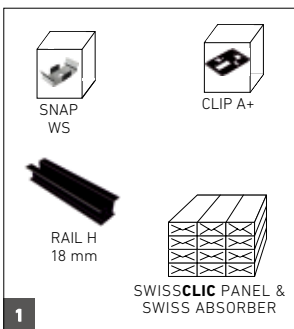
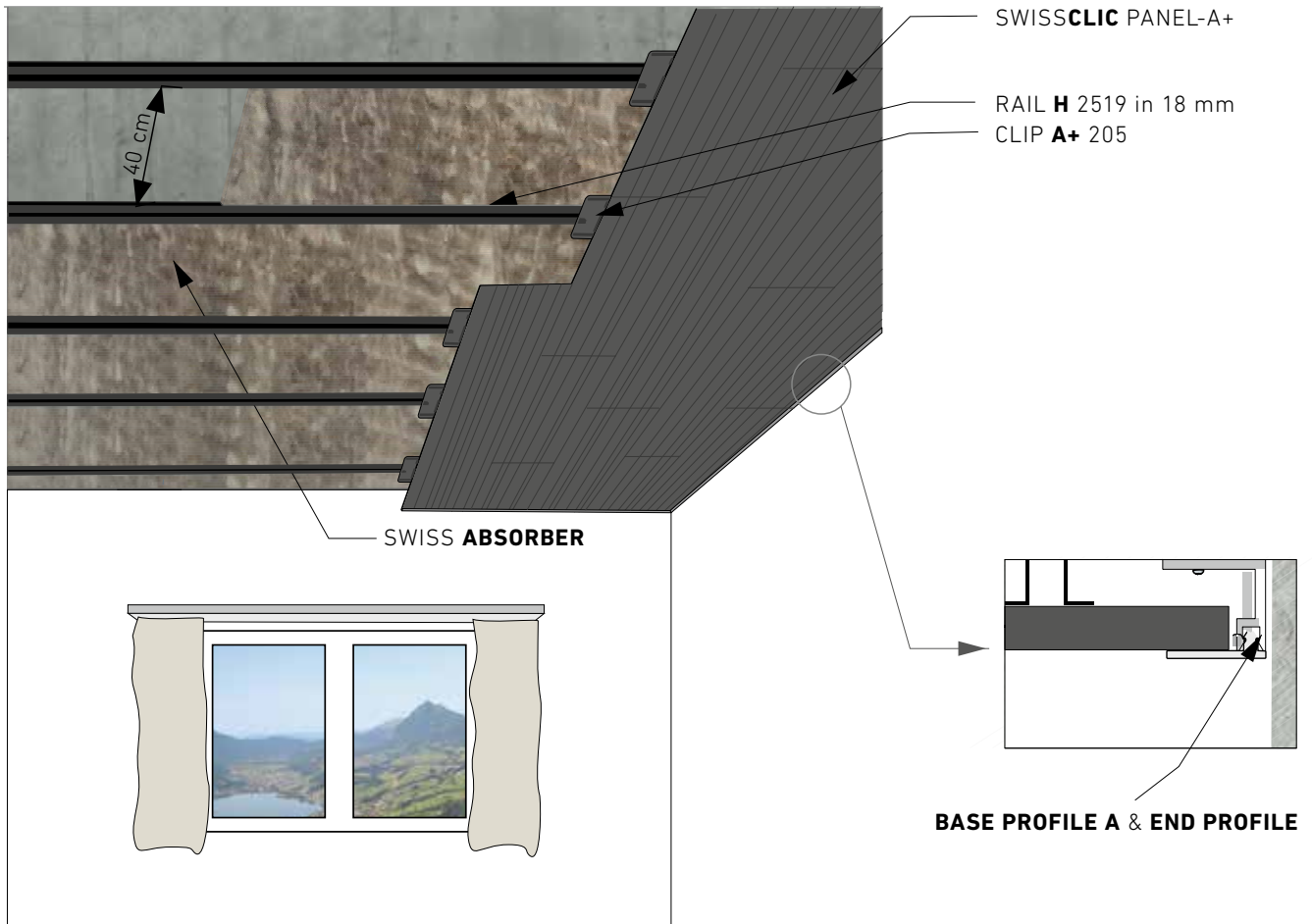
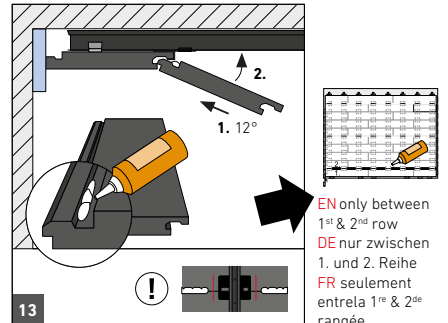
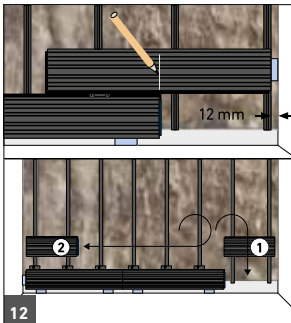
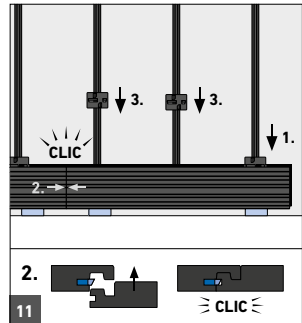
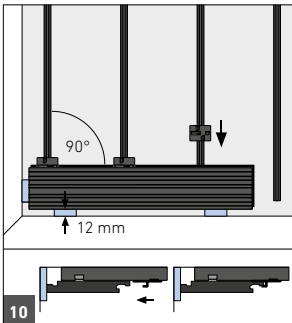
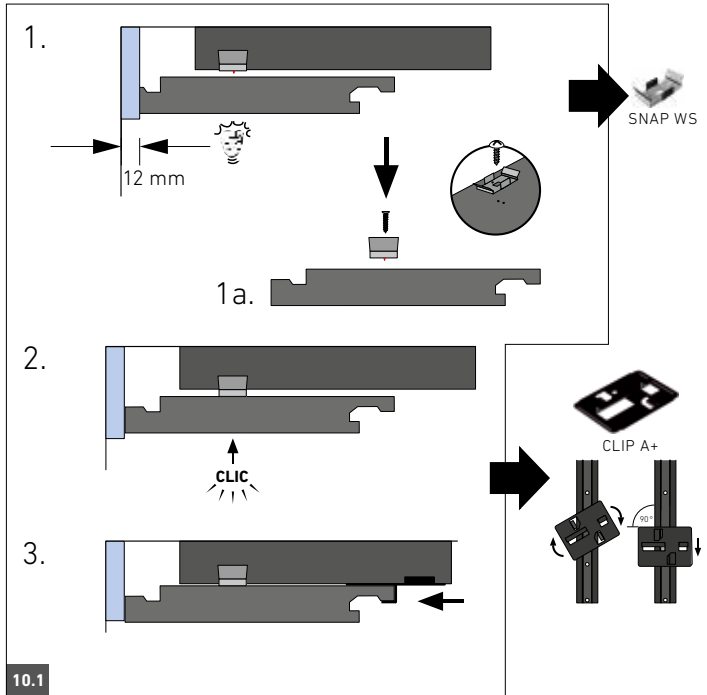
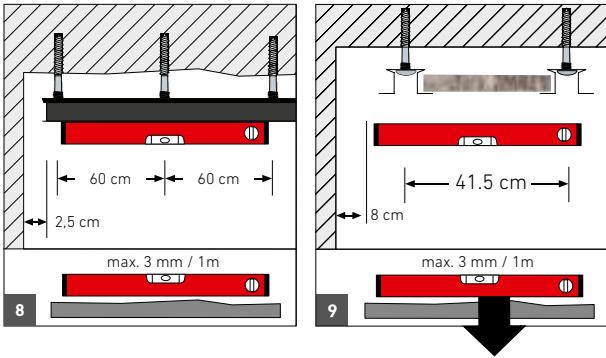


INSTALLATION GUIDE | VERLEGEANLEITUNG

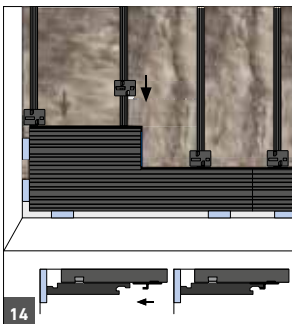
SWISSCLIC PANEL-A+ WITH RAILS SYSTEM



START



EN only between 1st & 2nd row
 DE nur zwischen 1. und 2. Reihe
 FR seulement entre la 1^{re} & 2^{de} rangée



FOR INSTALLATION WITHOUT BASE & END PROFIL

SIDE CUT

TOP VIEW

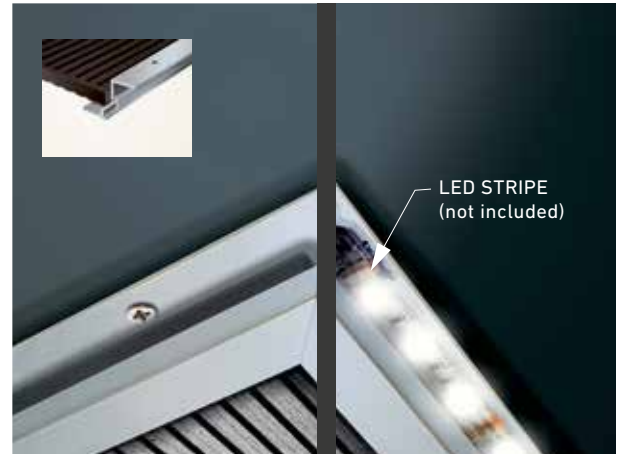
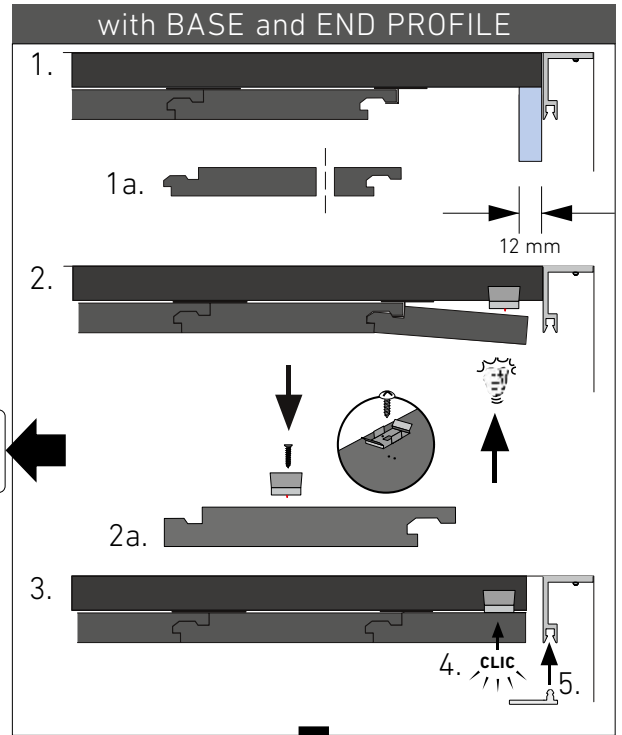
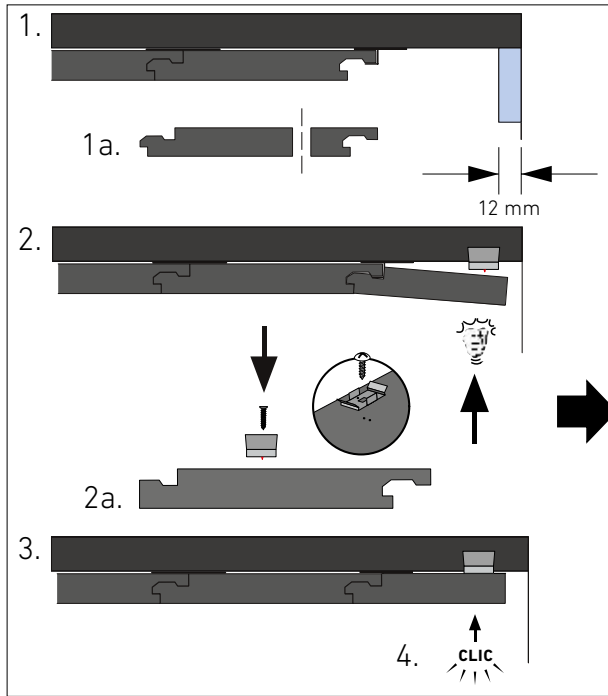
> 5 cm

EN
 If the distance is > 5 cm = put **elastic silicon glue** between SWISSCLIC PANEL and the RAIL subconstruction to hold the small lamellas.

DE
 Bei > 5 cm Distanz zum Steg = Setze **elastischen Silikonkleber** zwischen das SWISSCLIC PANEL und die RAIL Unterkonstruktion um die schmalen Lamellen zu halten.

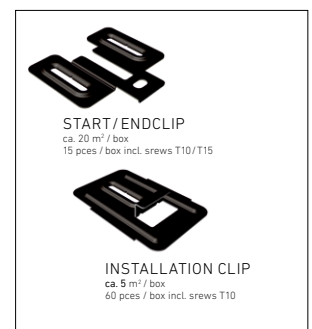
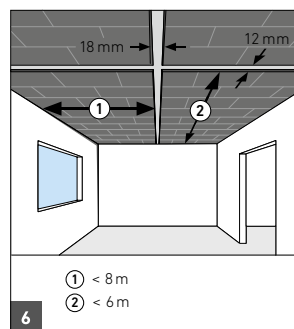
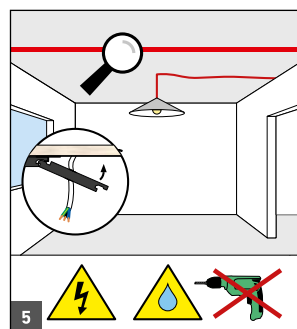
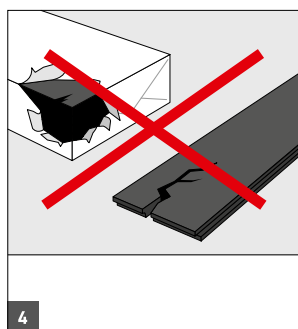
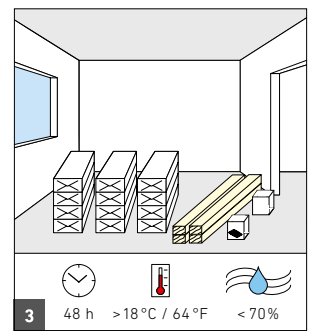
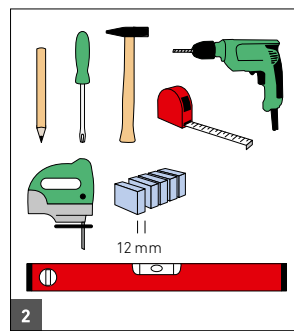
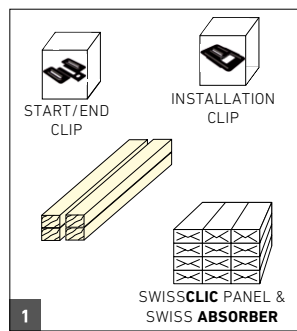
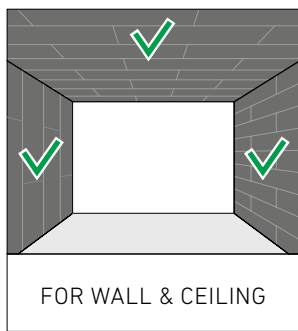
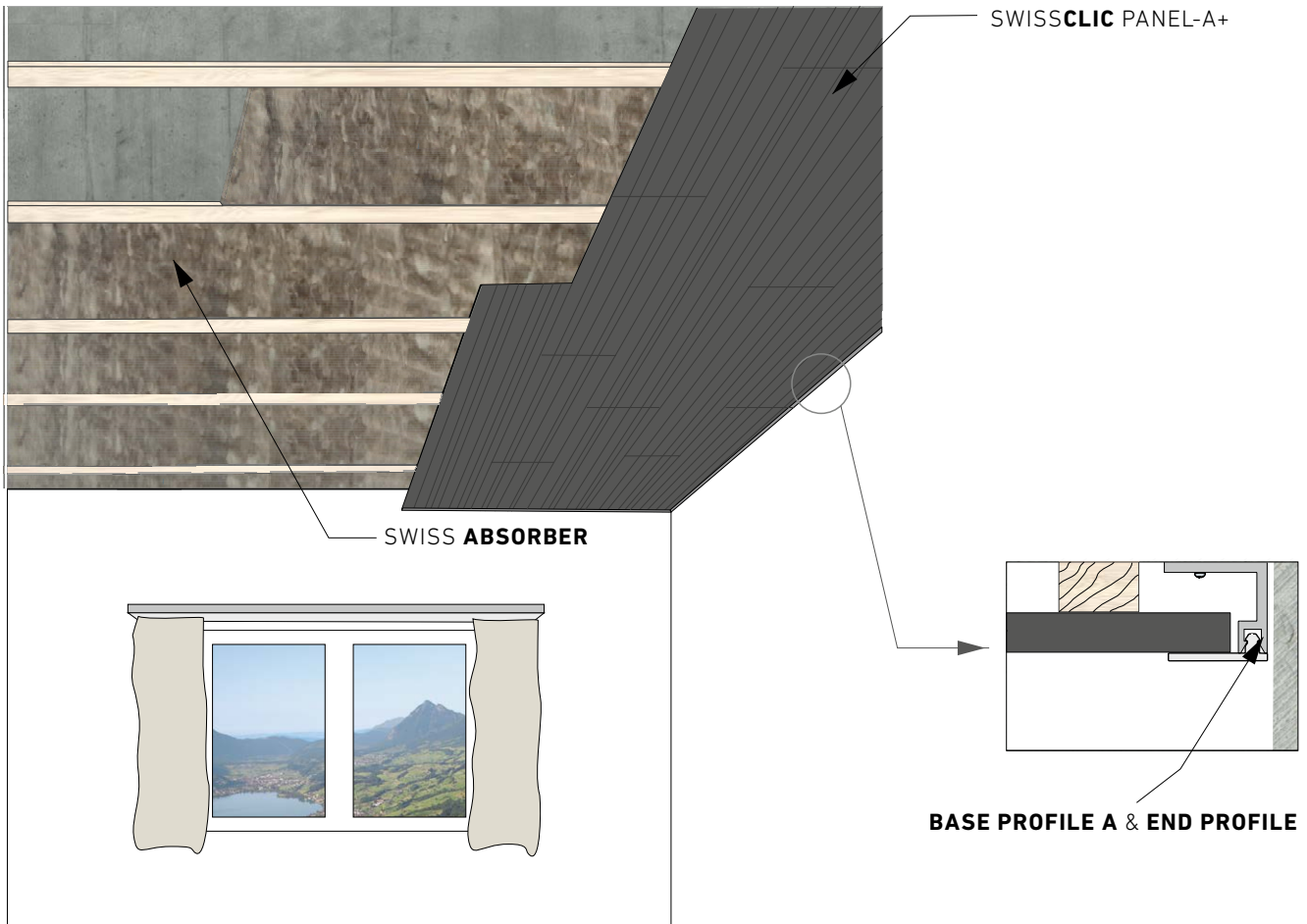
FR
 Pour une distance de > 5 cm jusqu'à la traverse = Mettez une **colle elastique silicone** entre le SWISSCLIC PANEL et le RAIL de sous-construction pour fixer les minces lamelles.

END

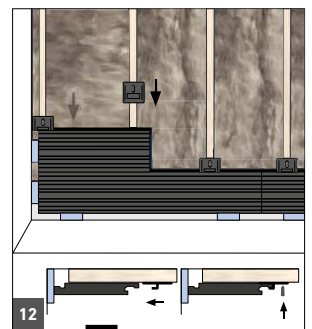
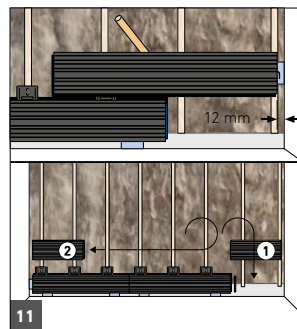
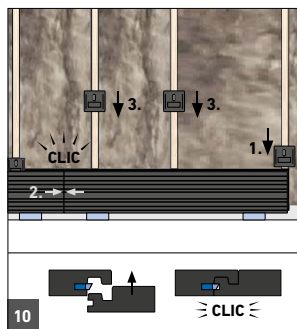
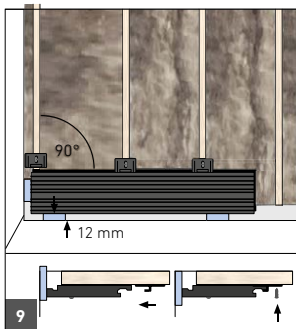
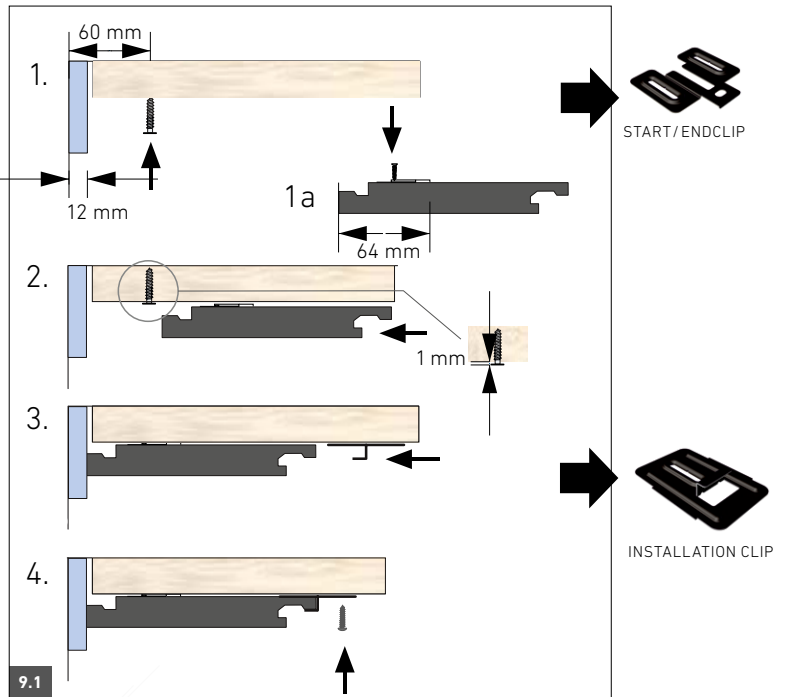
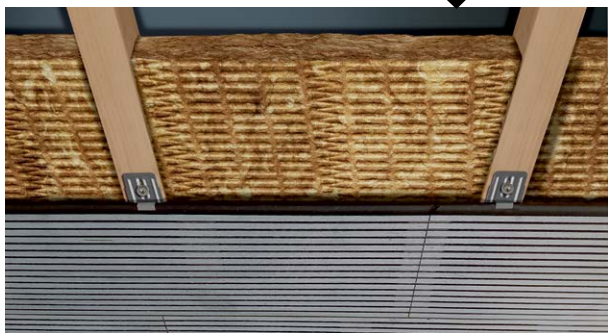
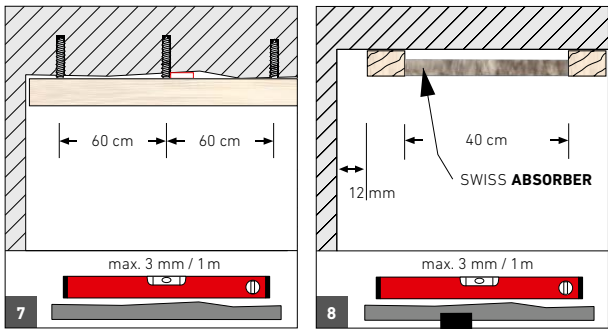


INSTALLATION GUIDE | VERLEGEANLEITUNG

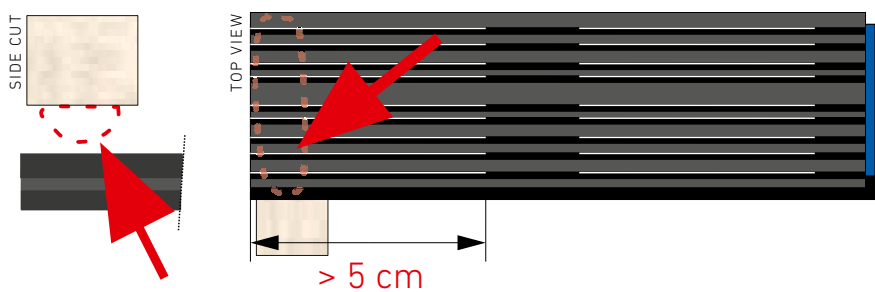
SWISSCLIC PANEL-A+ ON WOOD



START



FOR INSTALLATION WITHOUT BASE & END PROFIL



EN

If the distance is > 5 cm = put **elastic silicon glue** between SWISSCLIC PANEL and the wooden subconstruction to hold the small lamellas.

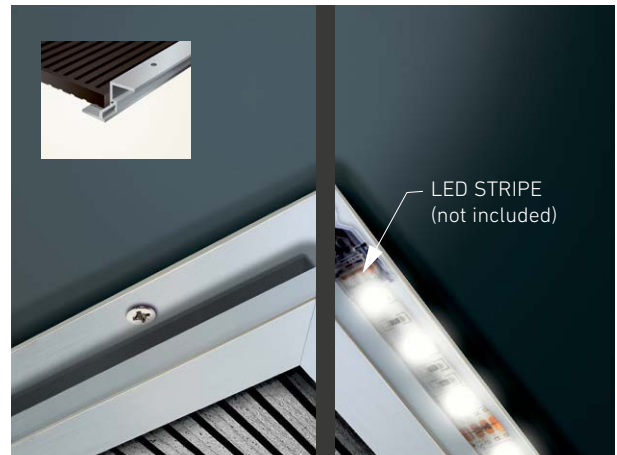
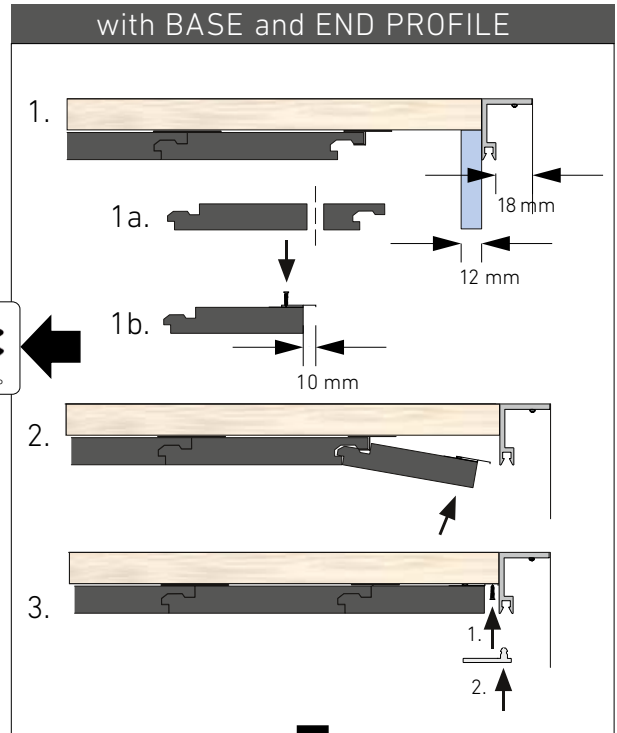
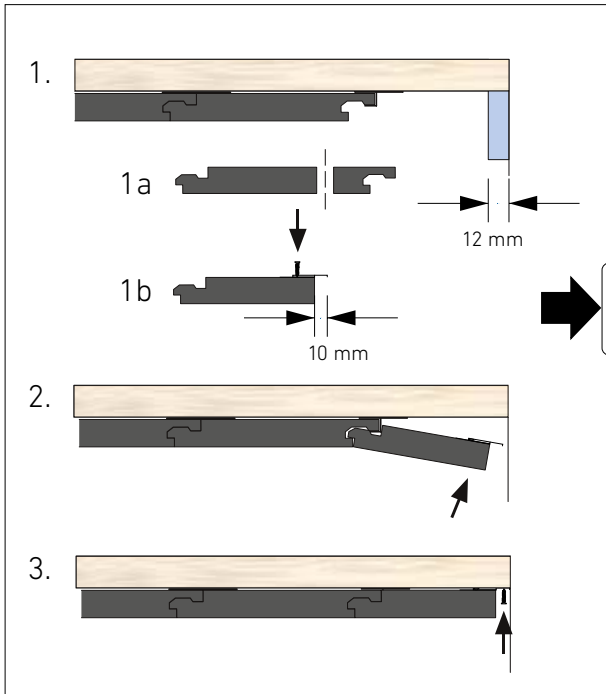
DE

Bei > 5 cm Distanz zum Steg = Setze **elastischen Silikonkleber** zwischen das SWISSCLIC PANEL und die hölzerne Unterkonstruktion um die schmalen Lamellen zu halten.

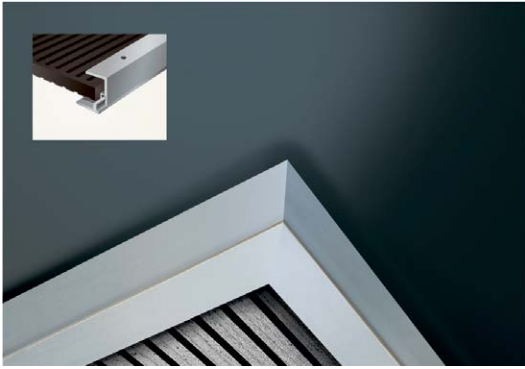
FR

Pour une distance de > 5 cm jusqu'à la traverse = Mettez une **colle élastique silicone** entre le SWISSCLIC PANEL et la sous-construction en bois pour fixer les minces lamelles.

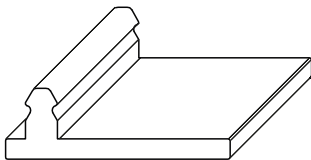
END



PROFILE

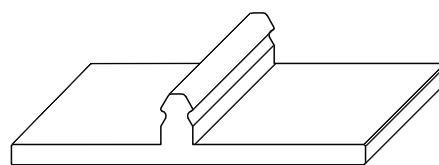


END & DILATATION PROFILE ALUMINIUM



END PROFILE

6 pcs / box

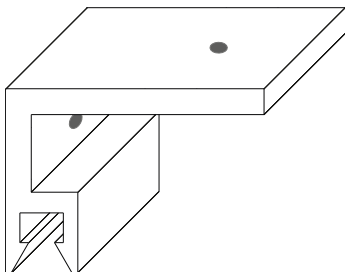


DILATATION PROFILE

2 pcs / box



BASE PROFILE ALUMINIUM

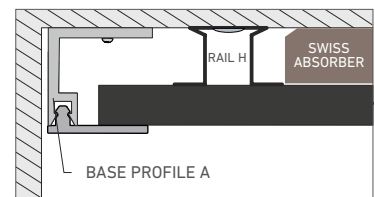


6 pcs / box

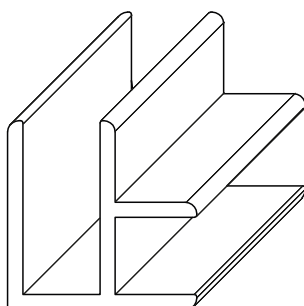
WS Nr. 2560



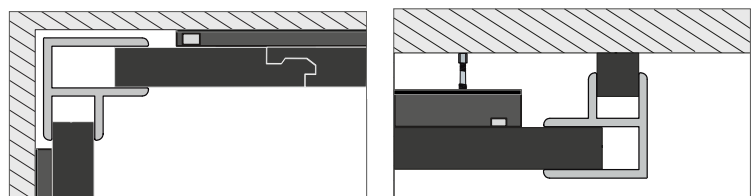
A Nr. 2570



CORNER PROFILE ALUMINIUM



2 pcs / box

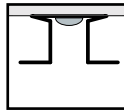
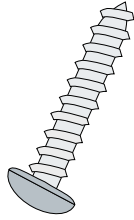


FIXATION WITH RAIL

MULTI-MONTI®-plus FIX-B BETONSCHRAUBE

vis béton | vite cemento | cement screw | tornillo concreto

Nr. 4614



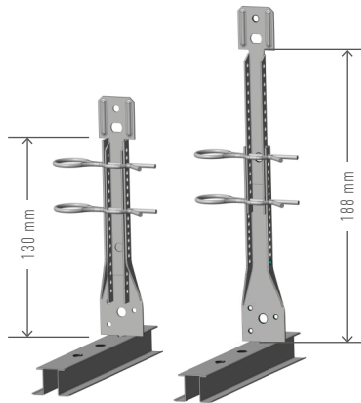
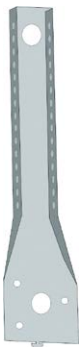
ca. 20 m² / box
100 pces / box



ADAPTER SYSTEM NONIUS NR. 301

für | pour | per | por | para RAIL H

ca. 20 m² / box
100 pces / box



DISTANCE HOLDER NR. 330

ca. 20 m² / box
100 pces / box

